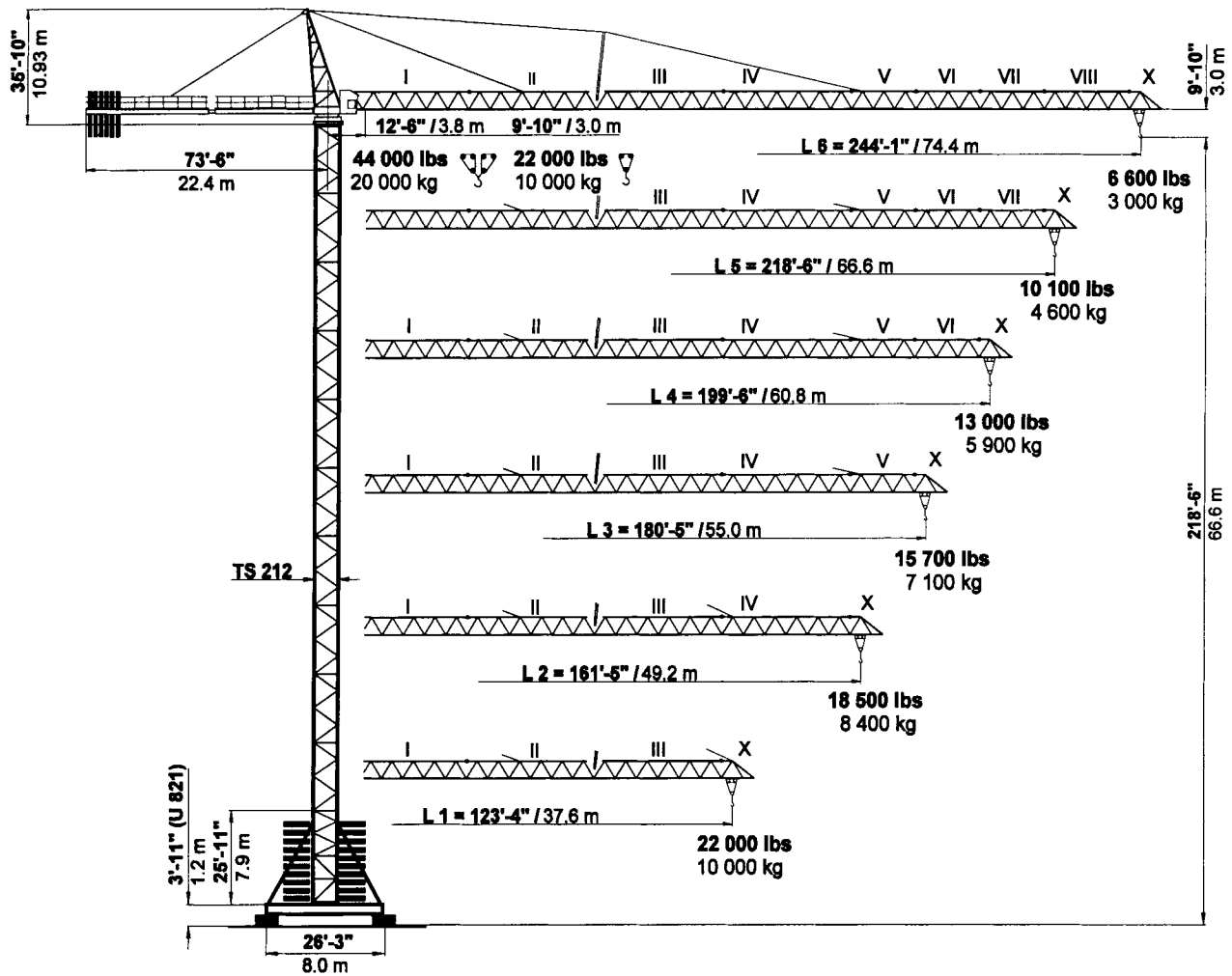




PEINER SK 405

Hammerhead Tower Crane
22,000-44,000 lbs. (10-20 mt)
Lifting Capacity

SPECIFICATIONS

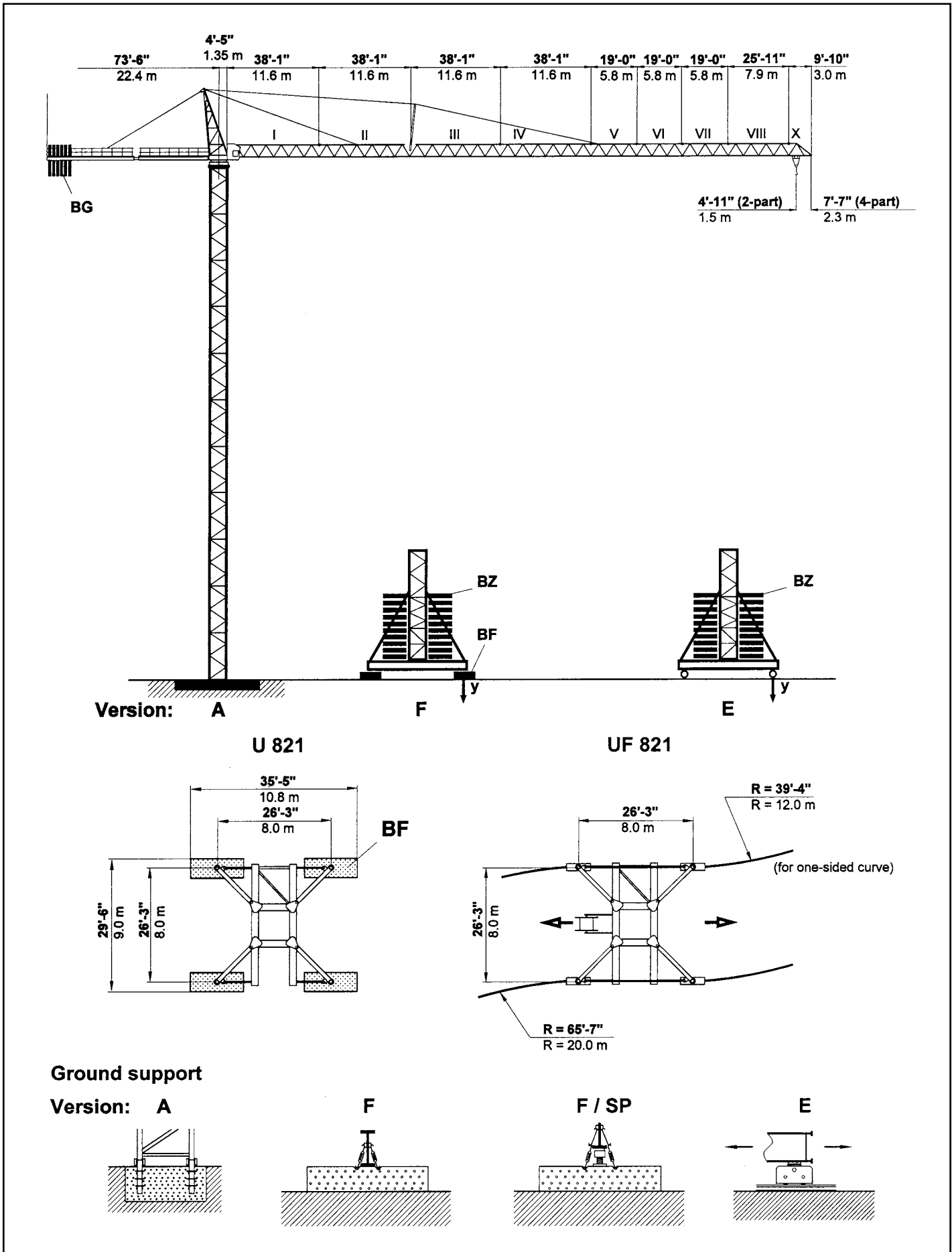


simple, available and
cost effective™

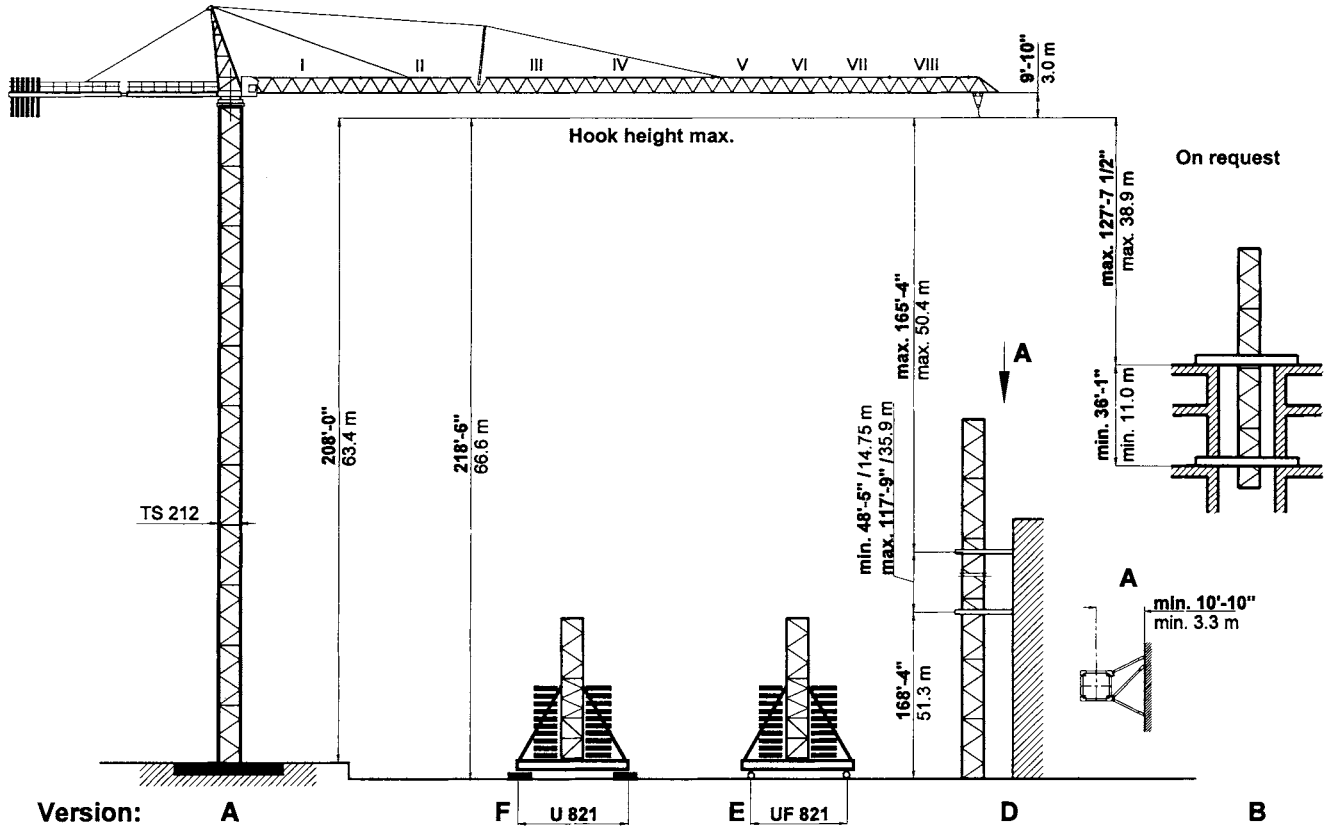
Machines shown may have optional equipment.

PEINER SK 405

Combinations of tower section, hook heights, forces acting per corner, base ballast



PEINER SK 405 Tower TS 212



TS 212	Version A	Version F					Version E			
Tower	HH	Tower	HH	BZ	y		BZ	y		
TS 212.1	ft m	TSV 212 TS 212.1	ft m	+ BF kips / t	in service kips / kN	out of service kips / kN	kips / t	in service kips / kN	out of service kips / kN	
11 x TS 212.1	208'-0"*** 63.4*	1 x TSV 212 10 x TS 212.1	218'-6"*** 66.6*	239.0 108.4	228 1015	568 1138	261.9 118.8	248 1105	267 1189	
10 x TS 212.1	188'-8" 57.5	1 x TSV 212 9 x TS 212.1	199'-2" 60.7	209.9 95.2	213 948	226 1005	232.8 105.6	232 1033	237 1056	
9 x TS 212.1	169'-3" 51.6	1 x TSV 212 8 x TS 212.1	179'-9" 54.8	180.8 82.0	198 882	198 879	203.7 92.4	217 963	209 929	
8 x TS 212.1	149'-11" 45.7	1 x TSV 212 7 x TS 212.1	160'-5" 48.9	151.7 68.8	184 817	170 758	174.6 79.2	201 894	182 808	
7 x TS 212.1	130'-7" 39.8	1 x TSV 212 6 x TS 212.1	141'-1" 43.0	122.6 55.6	170 754	144 642	174.6 79.2	193 860	163 725	
6 x TS 212.1	111'-3" 33.9	1 x TSV 212 5 x TS 212.1	121'-9" 37.1	122.6 55.6	163 725	127 566	145.5 66.0	178 794	138 615	
5 x TS 212.1	91'-10" 28.0	1 x TSV 212 4 x TS 212.1	102'-4" 31.2	122.6 55.6	157 697	111 495	145.5 66.0	172 763	122 544	
4 x TS 212.1	72'-6" 22.1	1 x TSV 212 3 x TS 212.1	83'-0" 25.3	93.5 42.4	143 638	105 469	116.4 52.8	157 700	108 480	
3 x TS 212.1	53'-2" 16.2	1 x TSV 212 2 x TS 212.1	63'-8" 19.4	93.5 42.4	140 622	105 469	116.4 52.8	151 671	108 480	
2 x TS 212.1	33'-10" 10.3	1 x TSV 212 1 x TS 212.1	44'-3" 13.5	122.6 55.6	140 622	105 469	116.4 52.8	145 645	108 480	
Foundation		Stationary base					Travelling base			
22'-8" x 22'-8" x 5'-7" 6.9 x 6.9 x 1.7 m		U 821					UF 821			
Anchor stools		BF		BZ		Bogie Curve				
4 x FF 212		4 x 8.82 kips 4 x 4.0 t		Block 14.55 kips Block 6.6 t		F 500				

If TSK 212 section is used the hook height is increased by 6'-7" (2 m).


* Lower climbing section after erection.


TS 212.1 = 19'-4 1/4" / 5.9 m

TSV 212 = 25'-11" / 7.9 m

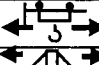


TSK 212 = 6'-7" / 2.0 m



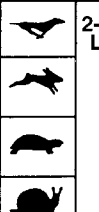
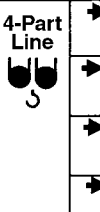



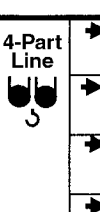
PEINER SK 405 Radius and Capacity

Jib ft m	Max. capacity max. 22,000 lbs 10.0 t	2-Part Line  max. 22,000 lbs max. 10.0 t																		
		Radius – ft./m Capacity – lbs./mt																		
		70'-11"	73'-10"	78'-9"	85'-4"	98'-5"	105'-0"	118'-1"	123'-4"	131'-3"	161'-5"	170'-7"	180'-5"	190'-3"	199'-6"	210'-0"	218'-6"	229'-8"	244'-1"	
L6	244'-1" 74.4	9'-10" - 88'-7" 3.0 - 27.0 m	22000	22000	22000	22000	19600	18100	15900	15000	14100	11000	10400	9800	9000	8600	7900	7700	7100	6600
L5	218'-6" 66.6	9'-10" - 105'-0" 3.0 - 32.0 m	22000	22000	22000	22000	22000	20700	19700	18100	14500	13700	12700	11900	11500	10600	10100			
L4	199'-6" 60.8	9'-10" - 123'-4" 3.0 - 37.6 m	22000	22000	22000	22000	22000	22000	22000	20700	16600	15700	14600	13700	13000					
L3	180'-5" 55.0	9'-10" - 131'-3" 3.0 - 40.0 m	22000	22000	22000	22000	22000	22000	22000	22000	17900	16800	15700							
L2	161'-5" 49.2	9'-10" - 137'-9" 3.0 - 42.0 m	22000	22000	22000	22000	22000	22000	22000	22000	18500									
L1	123'-4" 37.6	9'-10" - 123'-4" 3.0 - 37.6 m	22000	22000	22000	22000	22000	22000	22000											

ft m	44,000 lbs 20.0 t	4-Part Line  max. 44,000 lbs max. 20.0 t																Radius - 2'-7" (- 0.8 m)			
		L6	241'-6" 73.6	12'-6" - 45'-7" 3.8 - 13.9 m	25600	24300	22500	20300	17900	16300	14100	13200	11900	9300	8600	7900	7300	6800	6200	6000	5700
L5	215'-11" 65.8	12'-6" - 57'-5" 3.8 - 17.5 m	34400	32800	30400	27600	23400	20300	19000	18100	16500	12800	11900	11000	10100	9500	8800	8400			
L4	196'-10" 60.0	12'-6" - 65'-0" 3.8 - 19.8 m	40100	38100	35300	32200	27100	25100	22000	21400	19400	15200	13900	12800	11900	11200					
L3	177'-10" 54.2	12'-6" - 68'-7" 3.8 - 20.9 m	42500	40600	37700	34400	29100	26900	23400	22800	20700	16300	15000	14100							
L2	158'-10" 48.4	12'-6" - 70'-10" 3.8 - 21.6 m	44000	42100	39000	35700	30200	28000	24300	23700	21800	17000									
L1	120'-9" 36.8	12'-6" - 73'-10" 3.8 - 22.5 m	44000	44000	41000	37500	31700	29300	25600	24900											

Speeds

FU 8-200/4		v = 0 → ~ 265 fpm (80 m / min.)																		1 x 10.2 HP 1 x 7.5 kW
SR 10-190/3		v = 0 → ~ 115 fpm (36 m / min.)																		2 x 16.3 HP 2 x 12.0 kW
K WB 150/4		v = 0 → 1.0 rpm (min ⁻¹)																		L1, L2 2 x 12.24 HP 2 x 9 kW L3, L4, L5, L6 3 x 12.24 HP 3 x 9 kW

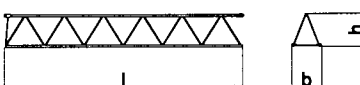
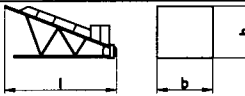
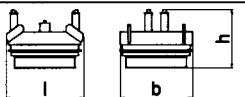
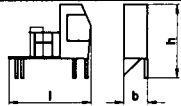

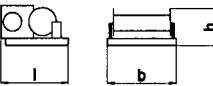
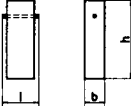

2-Part Line  HK max. = 820' (250 m) 5- Layers										480 V / 60 Hz / 3 ph	
Type SR WB 66- 100/4F [108 HP] [79 kW]			444 fpm 134 m/min	5 500 lbs 2 500 kg		222 fpm 67 m/min	11 000 lbs 5 000 kg	Total motor output ~155 HP without ~114 SR 10-190/3 kW			
			276 fpm 84 m/min	9 300 lbs 4 200 kg		138 fpm 42 m/min	18 600 lbs 8 400 kg				
			180 fpm 54 m/min	15 700 lbs 7 100 kg		90 fpm 27 m/min	31 400 lbs 14 200 kg				
			108 fpm 34 m/min	22 000 lbs 10 000 kg		54 fpm 17 m/min	44 000 lbs 20 000 kg				
2-Part Line  HK max. = 985' (300 m) 6- Layers										480 V / 60 Hz / 3 ph	
Type SR WB 102- 125/4F [167 HP] [122 kW]			444 fpm 134 m/min	7 700 lbs 3 500 kg		222 fpm 67 m/min	15 400 lbs 7 000 kg	Total motor output ~213 HP without ~157 SR 10-190/3 kW			
			276 fpm 84 m/min	13 200 lbs 6 000 kg		138 fpm 42 m/min	26 400 lbs 12 000 kg				
			180 fpm 54 m/min	22 000 lbs 10 000 kg		90 fpm 27 m/min	44 000 lbs 20 000 kg				
			108 fpm 34 m/min			54 fpm 17 m/min					

Counterweight

Jib		L 1	L 2	L 3	L 4	L 5	L 6
Counterweight 66 WB	BG	30 400 lbs 13 850 kg	40 400 lbs 18 400 kg	47 200 lbs 21 500 kg	47 200 lbs 21 500 kg	50 400 lbs 22 950 kg	50 800 lbs 23 150 kg
	[lbs]	4 x 6 800 1 x 3 200	5 x 6 800 2 x 3 200	6 x 6 800 2 x 3 200	6 x 6 800 2 x 3 200	6 x 6 800 3 x 3 200	7 x 6 800 1 x 3 200
	[t]	4 x 3.10 1 x 1.45	5 x 3.10 2 x 1.45	6 x 3.10 2 x 1.45	6 x 3.10 2 x 1.45	6 x 3.10 3 x 1.45	7 x 3.10 1 x 1.45
Counterweight 102 WB	BG	30 400 lbs 13 850 kg	37 200 lbs 16 950 kg	44 000 lbs 20 050 kg	44 000 lbs 20 050 kg	47 200 lbs 21 500 kg	47 600 lbs 21 700 kg
	[lbs]	4 x 6 800 1 x 3 200	5 x 6 800 1 x 3 200	6 x 6 800 1 x 3 200	6 x 6 800 1 x 3 200	6 x 6 800 2 x 3 200	7 x 6 800
	[t]	4 x 3.10 1 x 1.45	5 x 3.10 1 x 1.45	6 x 3.10 1 x 1.45	6 x 3.10 1 x 1.45	6 x 3.10 2 x 1.45	7 x 3.10

PEINER SK 405 Dimensions and transport weights

See operating manual for mounting weights

	Designation		Dimensions (ft / m)			Weight	Volume
			l	b	h	lbs / t	ft ³ / m ³
1	Jib		38.72	6.14	7.12	7 030	1 693
	Section I		11.80	1.87	2.17	3.19	47.9
	Section II		38.72	6.04	5.97	6 660	1 396
	Section III		11.80	1.84	1.82	3.02	39.4
	Section IV		38.72	6.04	5.97	3 660	1 396
	Section V		11.80	1.84	1.82	1.66	39.4
	Section VI		38.72	6.04	5.97	4 410	1 396
	Section VII		11.80	1.84	1.82	2.00	39.4
	Section VIII		19.69	6.04	5.97	1 980	710
	Jib tip X		6.00	1.84	1.82	0.90	20.0
					19.69	6.04	6.00
			6.00	1.84	1.83	0.65	20.1
			19.69	6.04	6.00	1 230	716
			6.00	1.84	1.83	0.56	20.1
			26.08	6.04	6.00	1 390	945
			7.95	1.84	1.83	0.63	26.7
			10.17	5.97	6.40	990	388
			3.10	1.82	1.95	0.45	11.0
2	Tower top compl.		29.36	7.05	8.96	8 600	1855
			8.95	2.15	2.73	3.90	52.5
3	Turntable with slewing ring support and motors		9.68	7.71	7.55	21 720	563
			2.95	2.35	2.30	9.85	15.9
4	Cabin		5.41	3.61	7.15	1 040	139
			1.65	1.10	2.18	0.47	3.9
	Support, railing, electrical panel		8.46	6.56	7.87	2 050	436
			2.58	2.00	2.40	0.93	12.4
5	Counter jib with hoist winch + electrical panel		38.06	9.02	5.57	15 810	1912
	G2		11.60	2.75	1.70	7.17	52.3
		G1	31.86	6.50	2.33	10.49 *	482
			9.71	1.98	0.71	2.15	13.6
	Hoist winch		7.51	5.45	3.28	5 400	134
	66 WB		2.29	1.66	1.00	2.45	8.4
		102 WB*	11.48	7.41	3.94	12720 *	335
			3.50	2.26	1.20	5.77 *	9.5
6	Counter jib ballast		5.08	0.63	14.76	6 800	47
			1.55	0.19	4.50	3.10	1.3
			3.94	0.46	9.00	3 200	16
			1.20	0.14	2.74	1.45	0.5
7	Tower section	TS 212.1	19.52	7.78	8.01	9 130	1 216
			5.95	2.37	2.45	4.14	34.4
		TSV 212 with struts	31.17	9.84	10.00	20 330	3 067
			9.50	3.00	3.05	9.22	86.9
		TSK 212.1	6.63	7.87	9.84	6 170	513
			2.02	2.40	3.00	2.80	14.5
8	Traveling base, folded	UF 821	41.01	9.74	7.05	35 050	2 816
			12.5	2.97	2.15	15.90	79.8
9	Stationary base, folded	U 821	34.55	9.06	2.79	17 130	873
			10.53	2.76	0.85	7.77	24.7
10	Central ballast block	BZ	4.50	2.05	0.40	6.60	3.7
			14.77	6.73	1.31	14.55	130
11	Foundation pad	BF	9.84	3.94	0.75	6.00	2.7
			3.00	1.20	2.46	13.22	95
12	Accessories					13 140	
						5.96	

()

For more information, product demonstration, or details on lease and rental plans, please contact your local Terex Towers Distributor.

We reserve the right to amend these specifications at any time without notice. The only warranty applicable is our standard written warranty applicable to the particular product and sale. We make no other warranty, expressed or implied.

 **TEREX TOWERS**

202 Raleigh Street
Wilmington, NC 28412 USA
(910) 395-8500 • FAX: (910) 395-8547
E-mail: wilmington@terexlifting.com

